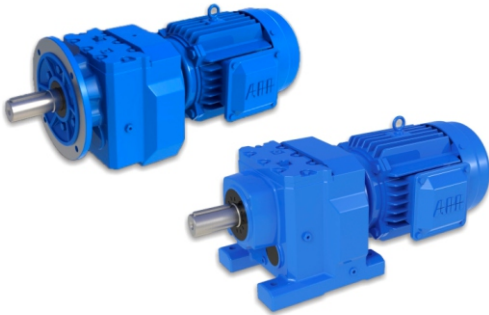


威高齿轮箱已经在行业中立足数十年,拥有丰富的生产经验和多项专利。愿景是为全球用户提供具有智能模块管理系统的齿轮箱产品,以促进机械行业的智能化和进步。威高传动的企业理念是:“我们以产品质量和服务质量赢得客户”。



型号:17~167	Model: 17~167
传动比:3.83~229.71	Ratio : 3.83~229.71
输入功率:0.18~160kw	Input Power : 0.18~160kw
输出扭矩:85~18000 N.m	Output Torque : 85~18000 N.m

WGT Gearbox has been in the industry for decades, with rich production experience and a number of patents. The vision is to provide global users with gearbox products with an intelligent module management system to promote the intelligence and progress of the machinery industry. The corporate philosophy of Weigao Transmission is: "We win customers with product quality and service quality".

1 R系列斜齿轮硬齿面减速机 R Series Helical Gear Units

性能与空间要求的绝佳配比,全系列扭矩值和转速范围宽,速比分级精细。

在您的应用场合中能够实现高效率传动。

They feature an ideal ratio between performance and space requirements - also in your application: Twenty frame sizes of the helical gear unit portfolio, with finely stepped torque ratings and gear unit ratios. High efficiency included.



型号:37~97	Model: 37~97
传动比: 10.27~230.48	Ratio : 10.27~230.48
输入功率:0.18~22kw	Input Power :0.18~22kw
输出扭矩:90~6500 N.m	Output Torque :90~6500 N.m

2 S系列斜齿-蜗轮蜗杆减速机 S Series Worm Gear Units

斜齿轮蜗轮蜗杆减速机的最大优势就是它的简单机械结构。它的效率远比通常的蜗轮减速机高。而且S系列减速机运行噪音低。

The strength of our helical-worm gear units is their simple mechanical structure. This yields a higher efficiency than pure worm gear units. In addition, the S series gear units are quiet during operation.

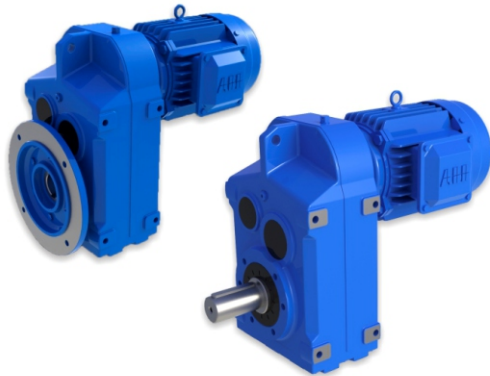


型号:37~187	Model: 37~187
传动比:5.36~180.78	Ratio: 5.36~180.78
输入功率:0.18~200kw	Input Power: 0.18~200kw
输出扭矩: 200~50000 N.m	Output Torque: 200~50000 N.m

3 K系列斜齿-螺旋锥齿轮减速机 K Series Helical Bevel Gear Units

斜齿轮-锥齿轮减速机采用零磨损设计,维护少,运行寿命长,从技术上来说是非常经济的直角减速机。它的效率非常高,是实实在在的节能高手。

Thanks to their long maintenance-free operating life and their wear-free gearing, our helical-bevel gear units are—technically speaking - economical right-angle gear units. Their high level of efficiency, however, makes them real energy savers.



型号:17~167	Model: 17~167
传动比:3.83~229.71	Ratio: 3.83~229.71
输入功率:0.18~160kw	Input Power: 0.18~160kw
输出扭矩:85~18000 N.m	Output Torque: 85~18000 N.m

4 F系列平行轴斜齿轮减速机 F Series Parallel Shaft Gear Units

平行轴减速机虽然外形设计纤细,但仍能提供130至18,000N.m的扭矩。是安装空间有限时的理想选择。

They feature an ideal ratio between performance and space requirements - also in your application: Twenty frame sizes of the helical gear unit portfolio, with finely stepped torque ratings and gear unit ratios. High efficiency included.



型号:2~25	Model: 2~25
传动比:1~5	Ratio: 1~5
输入功率:0.12~300kw	Input Power: 0.12~300kw
输出扭矩: 7.15~5713 N.m	Output Torque: 7.15~5713 N.m

5 T系列螺旋锥齿轮转向箱 T Series Spiral Bevel Steering Box

多样化的轴配置形式和速比,满足您的各种使用需求。

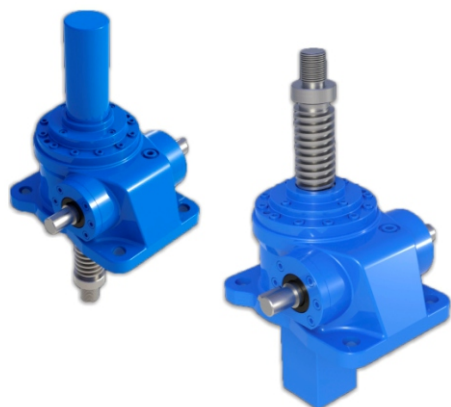
当速比不为1:1时,横轴输入、纵轴输出为减速,纵轴输入、横轴输出为增速。

采用高精度螺旋锥齿轮,效率高,传动平稳,噪声低,振动小,承载能力强。

Various shaft arrangements and ratio to meet your diverse needs.

When the ratio is not 1:1 and pinion shaft is input, so cross shaft is reduced output. When cross shaft is input, the pinion shaft is increased output.

High precision spiral bevel gear, high efficiency, stable transmission, low noise level, small vibration and strong loading capacity.



型号:010~1000	Model:010~1000
传动比:6~32	Ratio:6~32
输入功率:0.18~16.3kw	Input Power:0.18~16.3kw
起升力:500~26050 Kg	Lift Capacity:500~26050Kg

6 JW蜗轮丝杆升降机 JW Worm Screw Jack

有限元优化铸造箱体,提高30%的运行稳定性,有效降低整机噪音。

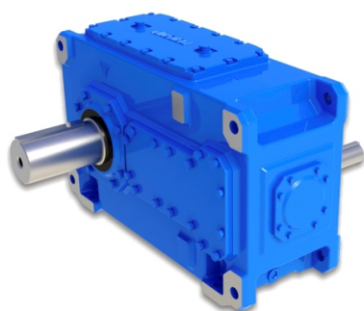
高精度蜗轮滚刀加工蜗轮,优化接触区,噪音更低,寿命更长。

优良的材质及热处理工艺提高产品可靠性和寿命。

The FEA design of the casting housing, which improves the running stability by 30% and effectively reduces the noise of the whole machine.

High precision worm hob is used to process worm gear, which optimizes contact area, ensures lower noise and longer lifespan.

Excellent material and heat treatment process improve products reliability and lifespan.



型号:3~26	Model:3~26
传动比:1.25~450	Ratio:1.25~450
输入功率:4.2~6958kw	Input Power:4.2~6958kw
输出扭矩:6.2~1030 kN.m	Output Torque:6.2~1030 kN.m

7 HB系列标准工业齿轮箱 HB Series Industrial Gear Units

采用吸音箱体结构、较大的箱体表面积和大风扇、圆柱齿轮和螺旋锥齿轮均采用先进的磨齿工艺,使整机的温升、噪声降低,传动的可靠性得到提高,传递功率增大。

Sound-absorbable structure, larger surface, big fan reduce temperature and noise, advanced grinding process of cylindrical gear and bevel gear improve stability and transmit power more efficeintly.

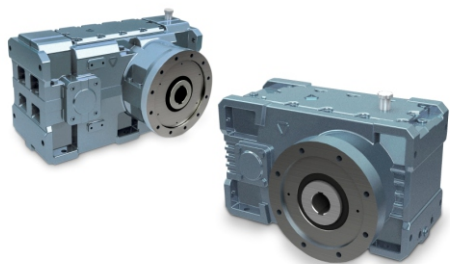


型号:9~34	Model:9~34
传动比:25~4000	Ratio:25~4000
输入功率:0.4~14000kw	Input Power:0.4~14000kw
输出扭矩:22~1920 N.m	Output Torque:22~1920 N.m

8 P系列行星齿轮减速机 P Series Planetary Gear Units

箱体内的太阳轮、行星轮、内齿圈及螺旋锥齿轮均采用可控气氛渗碳淬火处理,得到高硬耐磨表面,热处理后全部磨齿,降低了噪音,提高了整机的效率及使用寿命。

Sun and planet gears are processed by cementite and hardening, gears are processed by grinding, which improve th efficiency and lifetime of gear units.



型号:112~450	Model:112~450
传动比:8~20	Ratio:8~20
输入功率:4.4~188kw	Input Power:4.4~188kw
输出扭矩:0.65~11.1 kN.m	Output Torque:0.65~11.1 kN.m

9 ZLYJ单螺杆挤出机专用减速机

ZLYJ Series Single Screw Extruder Dedicated Gearbox

新一代ZLYJ系列单螺杆挤出机专用减速机采用轻量化设计,造型美观,密封性好,更高效。具有设计结构紧凑、承载能力强、传动平稳、低噪声等优点。

New generation of products using lightweight design, beautiful shape, more efficient.

It has the advantages of compact design structure, high carrying capacity, stable transmission and low noise.



型号:35~125	Model:35~125
传动比:5~31	Ratio:5~31
输入功率:2.5~226kw	Input Power:2.5~226kw
输出扭矩:420~17000 N.m	Output Torque:420~17000 N.m

10 RXG悬挂减速机

RXG Shaft Mounted Gear Reducer

RXG系列长期以来一直是采石场和矿山应用的畅销产品,其中绝对可靠性和低维护是关键因素,另一个成功的因素是,在倾斜输送机的情况下,可装退回装置来防止反向驱动。

The RXG Series has long been established as a best seller for quarry and mine applications where absolute reliability and low maintenance are key factors. Another winning factor is the backstop option that prevents back driving in the case of inclined conveyors.



型号:02~08	Model:02~08
传动比:3.5~3171	Ratio:3.5~3171
输入功率:1.5~40kw	Input Power:1.5~40kw
输出扭矩:2000~15000 N.m	Output Torque:2000~15000 N.m

11 RP系列行星减速机

RP Series Planetary Reducer

简单而实用的法兰,底脚和轴安装设计。

可提供更大范围的传动比和输出转速。

Simple and practical flange, foot and shaft installation design.

Can provide a wider range of transmission ratio and output speed.



型号:25~130	Model:25~130
传动比:7.5~100	Ratio:7.5~100
输入功率:0.18~100kw	Input Power:0.18~100kw
输出扭矩:2.6~610 N.m	Output Torque:2.6~610 N.m

12 RV系列蜗轮蜗杆减速机

RV Worm Reducer

机体采用优质的铝合金压铸成型。体积小、重量轻、散热快、不生锈、美观耐用;输出扭矩大;传动平稳、噪音小;可适应全方位安装。

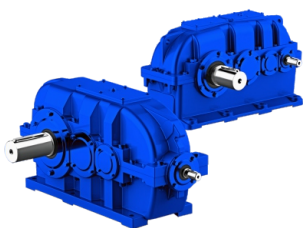
It's outer body is made of high quality aluminium alloy die casting into forming. It's small in volume, light weight, high in radiating efficiency, large in output torque, smooth in running and low noise. It's suitable for all positions.



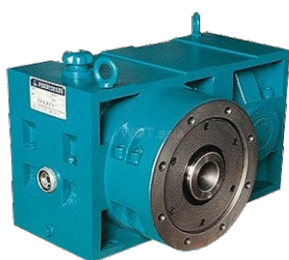
X系列 : 1、2、3、4、5、6、7、8、9、10、11
 B系列 : 0、1、2、3、4、5、6、7、8
 两级 : 42、53、63、74、84、85、95、106、116、117;
 三级 : 642、742、842、852、853、952、953、1063、
 1164、1174,



单级 速比 Single-stage ratio 1/5-1/60
 万能 速比 Universal ratio 1/5-1/60
 双级 速比 Two-stage ratio 1/100-1/3600



ZDY 速比 ratio Double stage 8-14 双级
 ZDY 速比 ratio Three 16-50 三级
 DBY 速比 Single stage 1.25-6.3 单级
 DBY 速比 ratio Double stage 6.30-20 双级
 DBY 速比 ratio Three 22.4-100 三级



ZLYJ 型号 Model: 112/133/146/173/200/
 225/250/280/315/330/375/420/450
 ZLYJ 速比 ratio: 8/10/12.5/16

13 BX摆线针轮减速机 BX cycloid reducer

机型分为:X系列、B系列两大类。

传动形式分为:单级、双级、三级。

结构型式分为卧式、立式、双轴型、直联型四种,可供用户选用满足各种不同需求。

The models are divided into: X series, B series two categories. The drive into the form: single-stage, two-stage, three.

The structure type is divided into horizontal, vertical, double-axle, four direct linking, available for users to choose to meet various needs.

14 WP系列蜗轮蜗杆减速机 WP series worm gear reducer

WP系列减速机的蜗杆采用45#优质钢经热处理加工制造,蜗轮用锡青铜铸造而成,耐磨性能良好,尤其在承载能力上更加明显,蜗轮蜗杆减速机主要适用于塑料、冶金、饮料、矿山、起重运输、化工建筑等各种机械设备的减速传动。

The worm of the WP series reducer is made of 45# high-quality steel and processed by heat treatment. The worm wheel is made of tin bronze. It has good wear resistance, especially in the bearing capacity. The worm gear reducer is mainly suitable for plastics, metallurgy, and beverages, Mining, lifting and transportation, chemical construction and other mechanical equipment deceleration transmission.

15 ZDY DBY圆锥圆柱齿轮减速机 ZDY DBY cone cylinder gear reducer

圆柱齿轮减速机, 齿轮渗碳, 淬火, 磨削, 承载力高, 噪音低; 主要用于皮带输送机和各种运输机械。优点是: 输入轴和输出轴垂直布置在驱动装置中, 承载能力强, 使用寿命长, 体积小, 效率高, 重量轻。

Cylindrical gear reducer, gear carburizing, quenching, grinding, high bearing capacity, low noise; mainly used for belt conveyors and various transportation machinery. The advantages are: the input shaft and the output shaft are arranged vertically in the drive device, with strong bearing capacity, long service life, small size, high efficiency and light weight.

16 ZLYJ塑料挤出机双螺杆挤出机 ZLYJ Plastic Extruder Twin Screw Extruder

ZLYJ系列减速机是一种带推力座的高精度硬齿面, 专为塑料螺杆挤出机设计。齿轮通过渗碳, 淬火和齿轮磨削加工。整机具有体积小, 承载能力强, 传动平稳, 噪音低, 效率高的特点。

ZLYJ series reducer is a high-precision hard tooth surface with thrust seat, specially designed for plastic screw extruder. Gears are processed by carburizing, quenching and gear grinding. The whole machine has the characteristics of small size, strong carrying capacity, stable transmission, low noise and high efficiency.