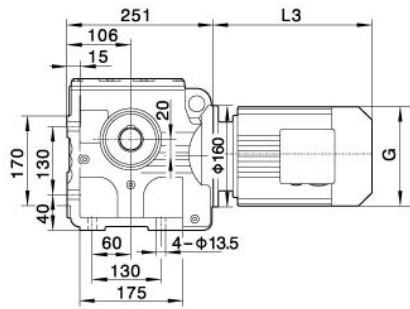
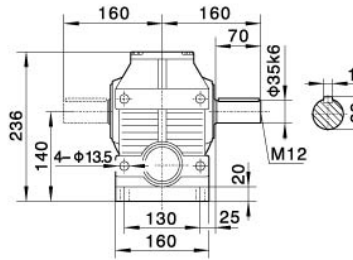


外形安装尺寸
Mounting Dimension Sheets-overview

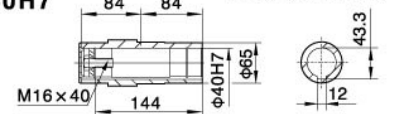


S67

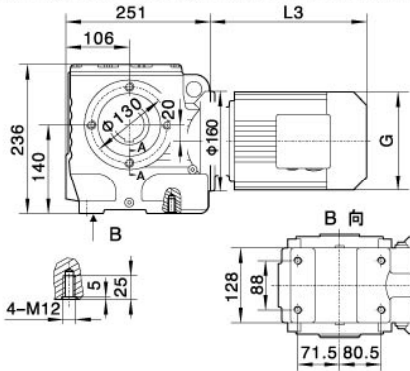
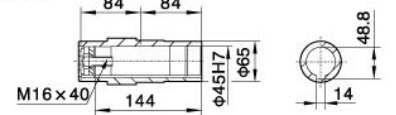


SA67/SAZ67/SAF67空心轴

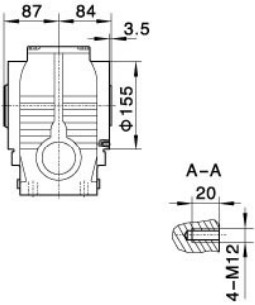
Φ40H7



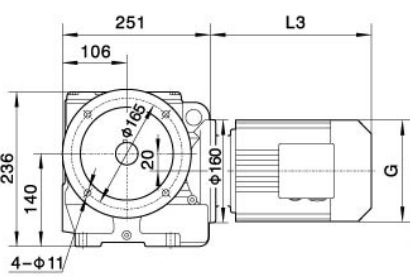
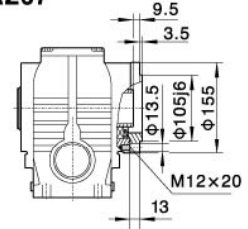
Φ45H7



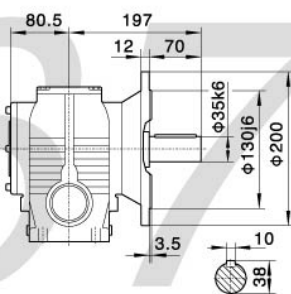
SA67



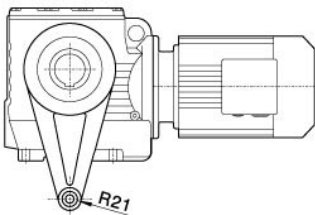
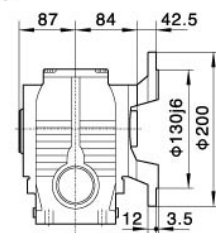
SAZ67



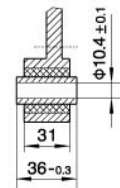
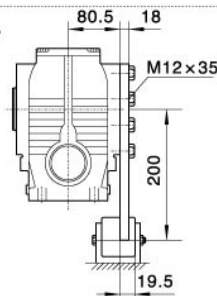
SF67



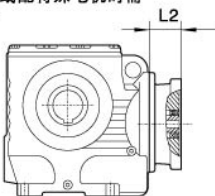
SAF67



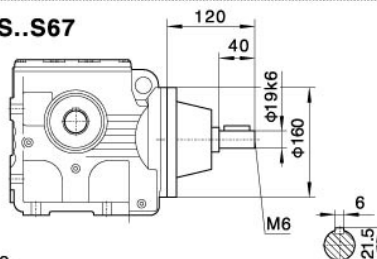
SAT67



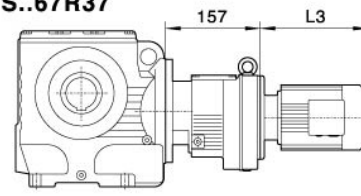
电机需方配或配特殊电机时需加联接法兰



S..S67



S..67R37



注: 其余尺寸见相对应结构形式
Note: For other values please refer to the opposed structure.

When equipping the user's motor or the special one, the flange is required to be connected.

Y2电机座号 Motor size	71	80	90S	90L	100	112M	132S
功率/4P Power/(kW)	0.25 0.37	0.55 0.75	1.1	1.5	2.2 3.0	4.0	5.5
L3	245	278	304	328	350	380	425
G	145	175	195	195	215	240	275
L2	81	81	81	81	93	93	101

注:1.SA、SF、SAF、SAZ壳体为通用件,安装尺寸均可相互参照。2."S.."表示S、SA、SF、SAF、SAZ

Note:1.The housings of SA、SF、SAF、SAZ are common parts.The mounting dimensions may consult each other. 2."S.."mean S、SA、SF、SAF、SAZ