

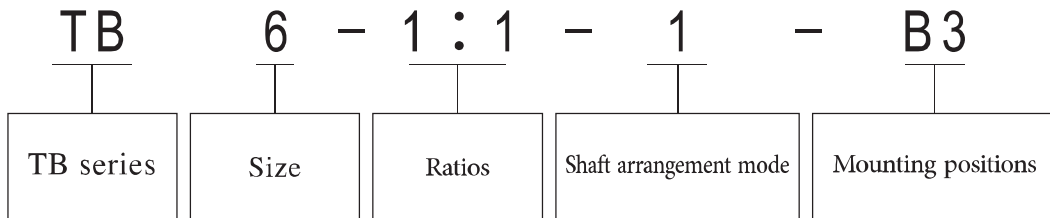


TB series spiral bevel gear units

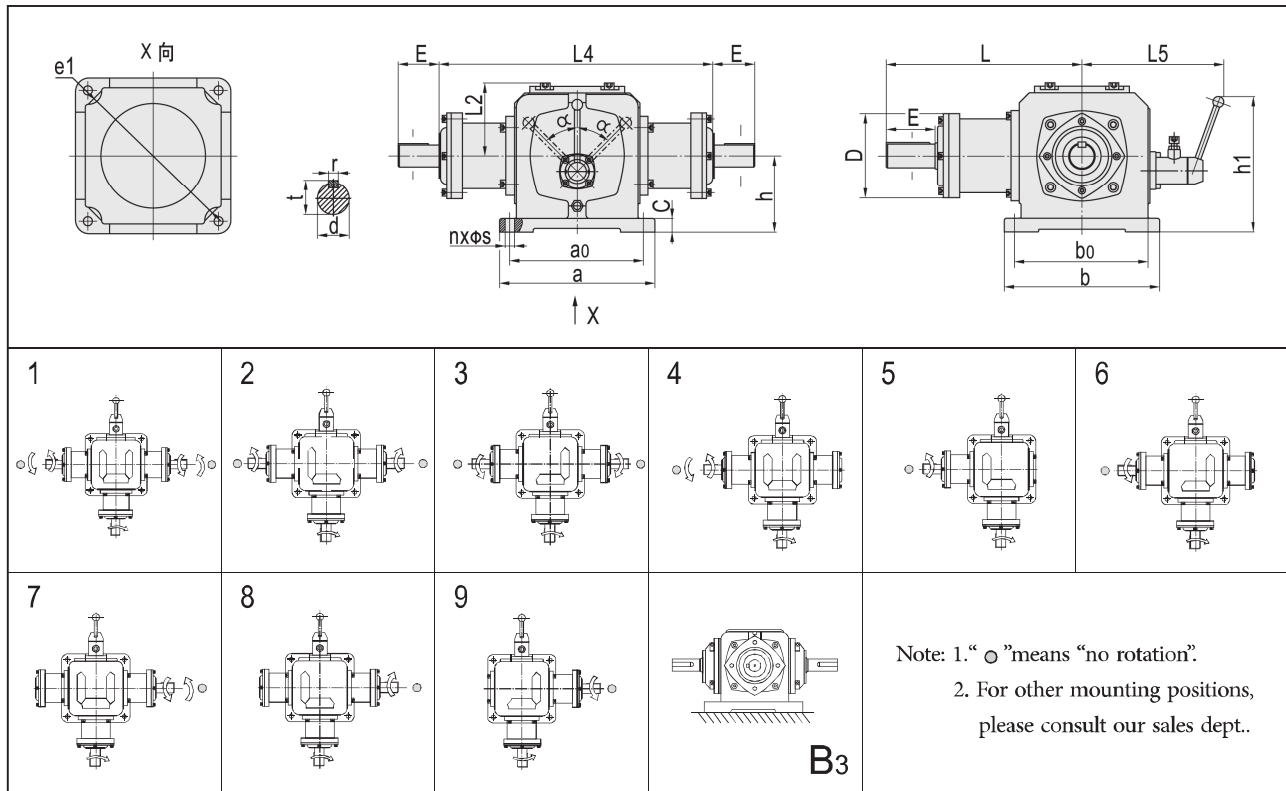
TB series spiral bevel gear units are developed on the base of T series spiral bevel gear units.

1. Output rotation can be forward reverse or stop while input rotation is not changed.
2. It has one Y-shaft design and two Y-shafts design. In two Y-shaft design, any Y-shaft could be stopped rotating independently.
3. If the ratio is not 1:1, please contact our sales dept..
4. We listed TB6, TB7, TB8, TB10, TB12, TB16 in this manual. For other sizes, please consult our sales dept..

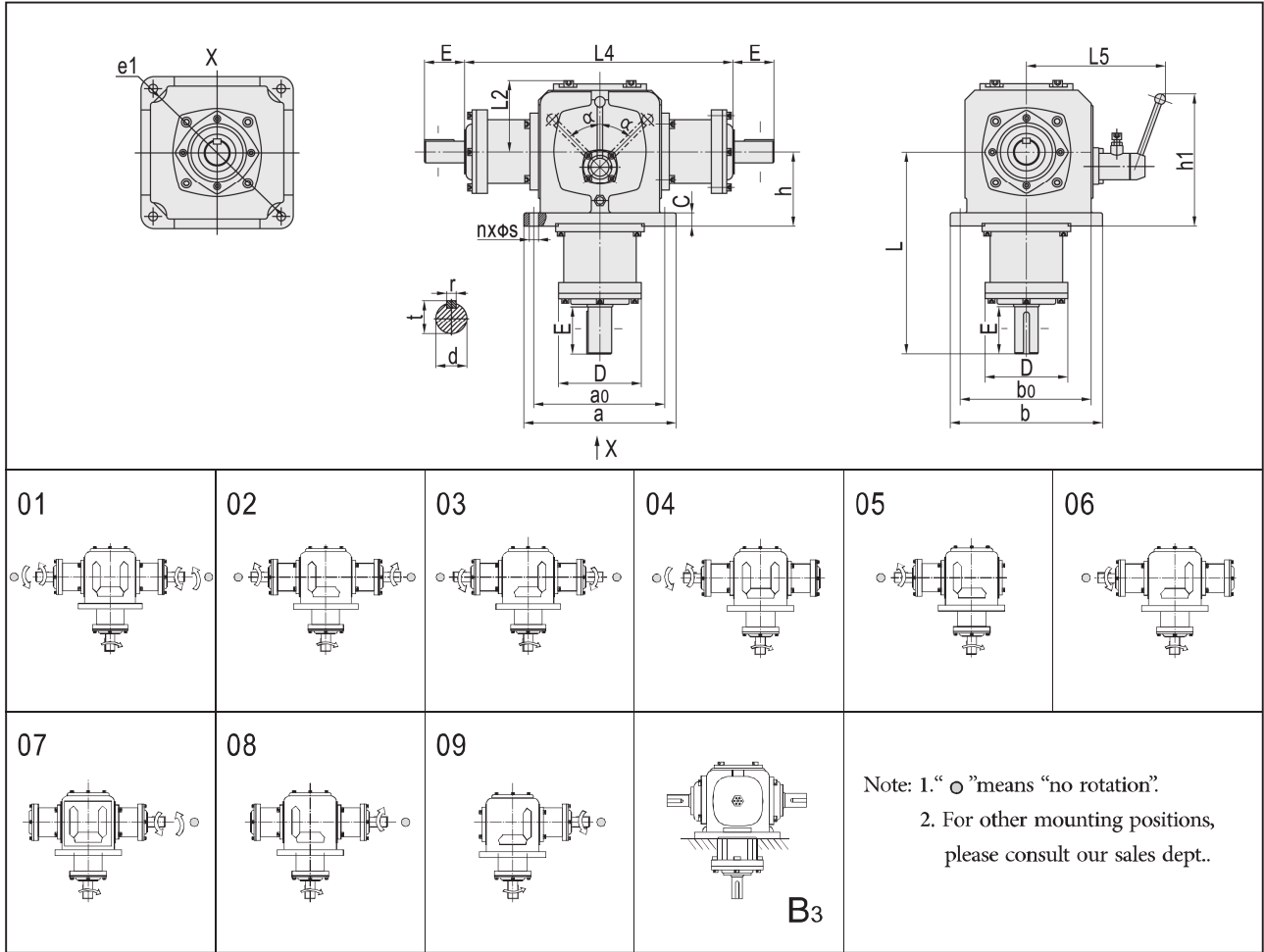
TB series model illustration:



Relation between shaft arrangement and direction of rotation; Mounting positions and dimensions:



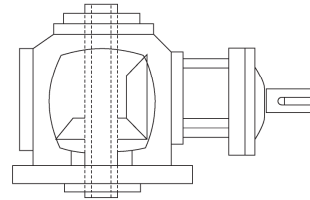
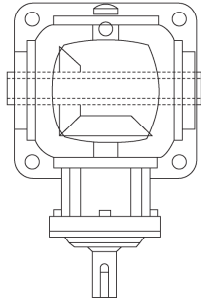
T



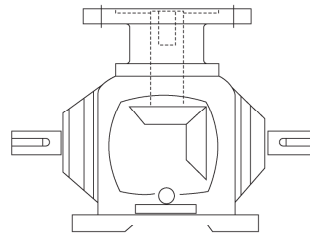
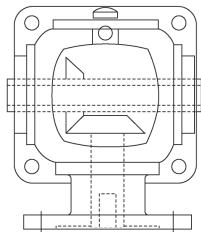
	TB6	TB7	TB8	TB10	TB12	TB16
a	190	210	235	285	340	390
a0	152	174	195	240	290	330
b	190	210	235	285	340	390
b0	152	174	195	240	290	330
c	17	20	23	25	32	40
d(h7)	25	32	40	45	50	60
E	50	62	75	90	100	105
e1(H8)X	190X5	220X5	250X5	305X5	370X5	420X7
L2	87	99	114.5	133	160	186
h	90	100	115	140	175	200
L	222	265	308	360	415	455
L4	214	226	266	300	350	420
L5	175	186	239	262	307.5	336
h1	182	192.5	225	248	313.3	324
n	4	4	4	4	4	4
r	8	10	12	14	14	18
S	14	14	14	16	21	25
t	28	35	43	48.5	53.5	64
D	115	125	159	155	168	193
α	45°	45°	40°	40°	42°	42°



If the gear unit should be equipped with flange, hollow shaft, or spline, please consult our sales dept.
involute spline or shrink disk:



With hollow input or output shaft



With input or output flange

T